

# SKYLINE PARK

## SECOND ADDITION

A SUBDIVISION OF THAT PART OF TRACTS 3, 4, 5, & 6, GAINES ESTATE SUBDIVISION PLAT BOOK 1 PAGE 90 PUBLIC RECORDS OF MARTIN COUNTY FLORIDA LYING WLY & SLY OF SKYLINE PARK SUBDIVISION PLAT BOOK 2 PAGE 77 PUBLIC RECORDS OF

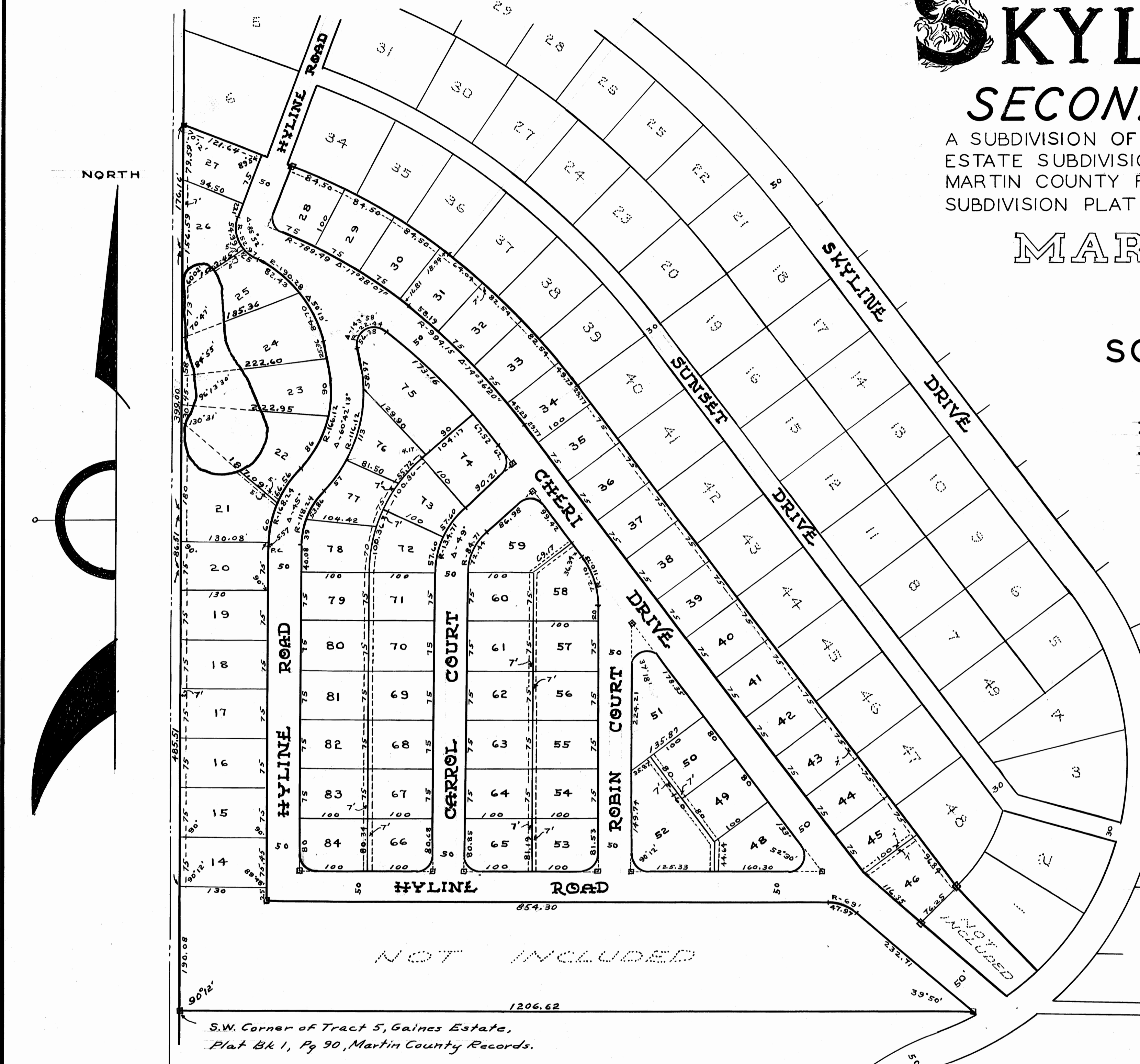
### MARTIN COUNTY, FLORIDA.

SCALE 1" = 100'

I hereby certify that I have examined the attached plat and find that it complies, in form, with all the requirements of Chapter 177, Florida Statutes, and that this plat was filed for record at 11:18 AM this 11th day of March, A.D., 1959 and duly recorded in Plat Bk. 3, Pg. 109, in the office of the Clerk of the Circuit Court, at Stuart, Florida.

CLERK OF THE CIRCUIT COURT

By: Dorothy Purser  
File No. 68177 By: Rettie Zammita, D.C.



#### DEDICATION

STATE OF FLORIDA  
COUNTY OF MARTIN

Know all men by these presents that Samuel N. Rhodes and Letitia E. Rhodes, his wife, joined by Tilton, Inc., a corporation, organized and existing under the laws of the State of Florida, owners of the land described under the foregoing title caption, have caused said land to be surveyed and platted and do hereby dedicate, to the perpetual use of the public, the roads shown hereon.

In witness whereof, we have hereunto set our hand and seal this 24th day of Feb., A.D., 1959

Meribel B. Wright WITNESS  
James E. Brock WITNESS

Sam N. Rhodes SEAL  
Letitia E. Rhodes SEAL

TILTON, INC.  
W.B. Tilton Jr. PRESIDENT  
W.B. Tilton Jr. SECRETARY

#### ACKNOWLEDGEMENT

STATE OF FLORIDA  
COUNTY OF MARTIN

Before me this day personally appeared Samuel N. Rhodes and Letitia E. Rhodes, his wife, and W. B. Tilton and W. B. Tilton, Jr., President and Secretary, respectively, of Tilton, Inc., well known to me to be the persons who executed the foregoing dedication of plat, and acknowledged to, and before me, that they executed the same for the uses and purposes therein stated.

Witness my hand and official seal this 24th day of Feb., A.D., 1959 at Stuart, Florida.

Merian A. Magos NOTARY PUBLIC

My commission expires May 13, 1960

#### CERTIFICATE

STATE OF FLORIDA  
COUNTY OF MARTIN

I hereby certify that the tract of land subdivided and shown hereon was surveyed under my direction and that this plat is a true and correct representation thereof, to the best of my knowledge and belief, and that permanent reference monuments were placed as prescribed by law.

James E. Brock REGISTERED LAND SURVEYOR  
FLORIDA CERTIFICATE NO. 688

Sworn and subscribed to before me this 24th day of Feb., A.D., 1959 at Stuart, Florida.

Merian A. Magos NOTARY PUBLIC

My commission expires May 13, 1960

#### NOTE:

Radii of all returns are 25', unless otherwise noted. Where radius is 25' the lot measure is given to the point of intersection of the tangents.

--- Public Utilities easement line.

□ Permanent reference monument

--- Drainage Easement

APPROVED M.A. Rowell

BOARD OF COUNTY COMMISSIONERS

March, 10, 1959

STAFFORD & BROOK  
Engineering-Surveying  
334 East 4th Street  
Stuart, Florida.